

53 SOUTH KNOLL ROAD

MILL VALLEY, CA 94941

**Estimated Total Finished
Square Footage: 3,595 SQ FT**

Above-Grade: 3,595 SQ FT Below-Grade: N/A

Plus 490 SQ FT 2-Car Garage on Main Level

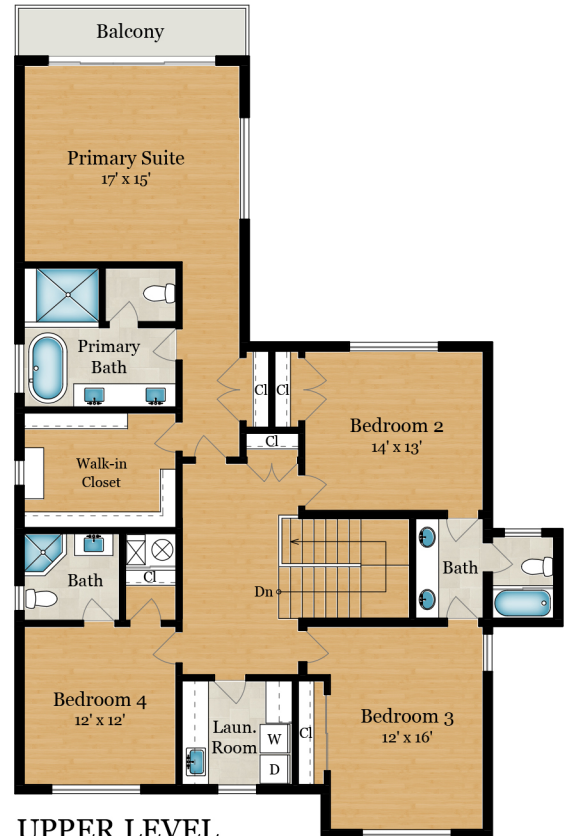
Calculated per ANSI Standard Z765-2003.

* Estimated Total Finished & Unfinished Square Footage: 4,085 SQ FT



MAIN LEVEL

1,785 SQ FT



UPPER LEVEL

1,810 SQ FT



53 SOUTH KNOLL ROAD

MILL VALLEY, CA 94941

